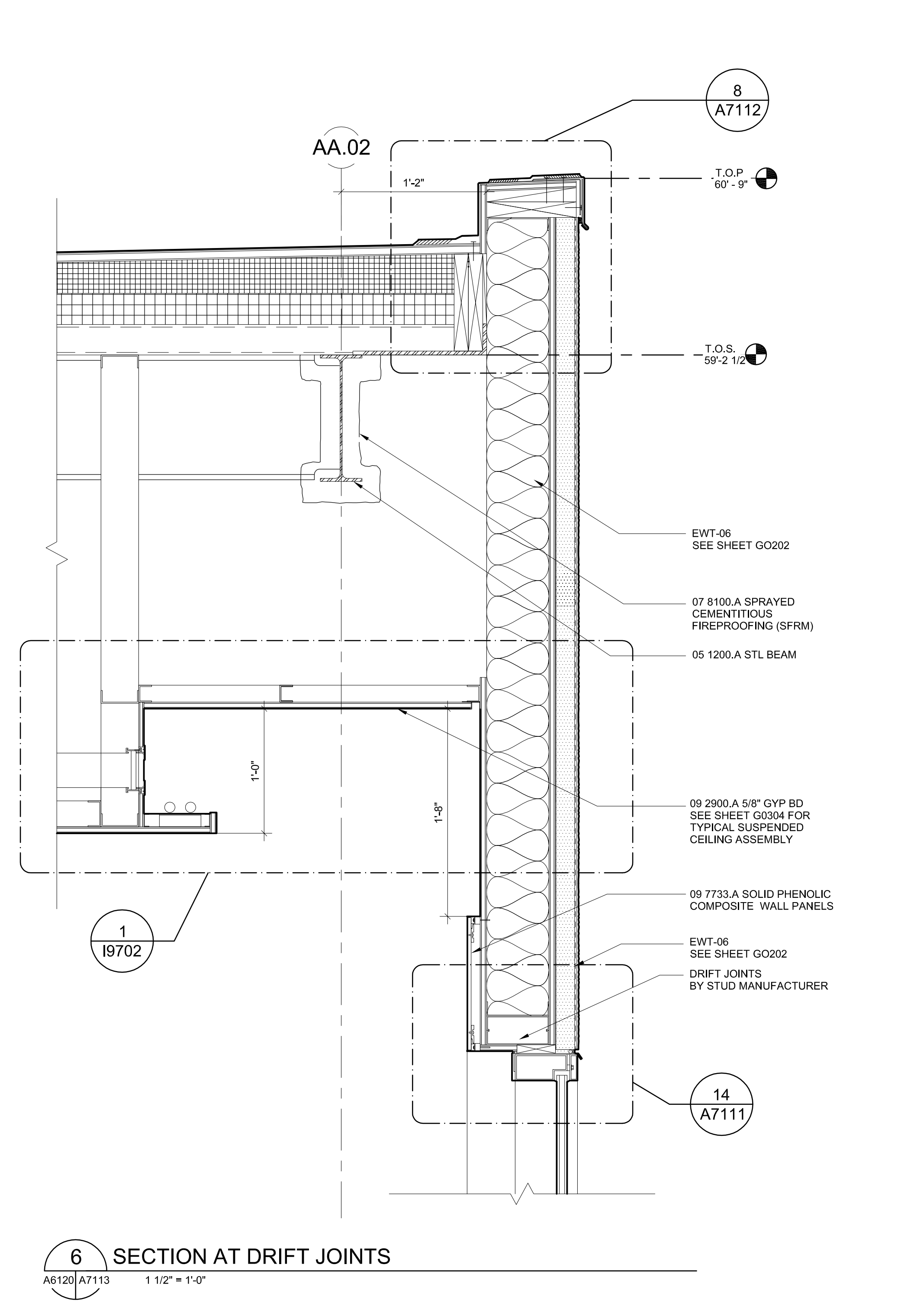
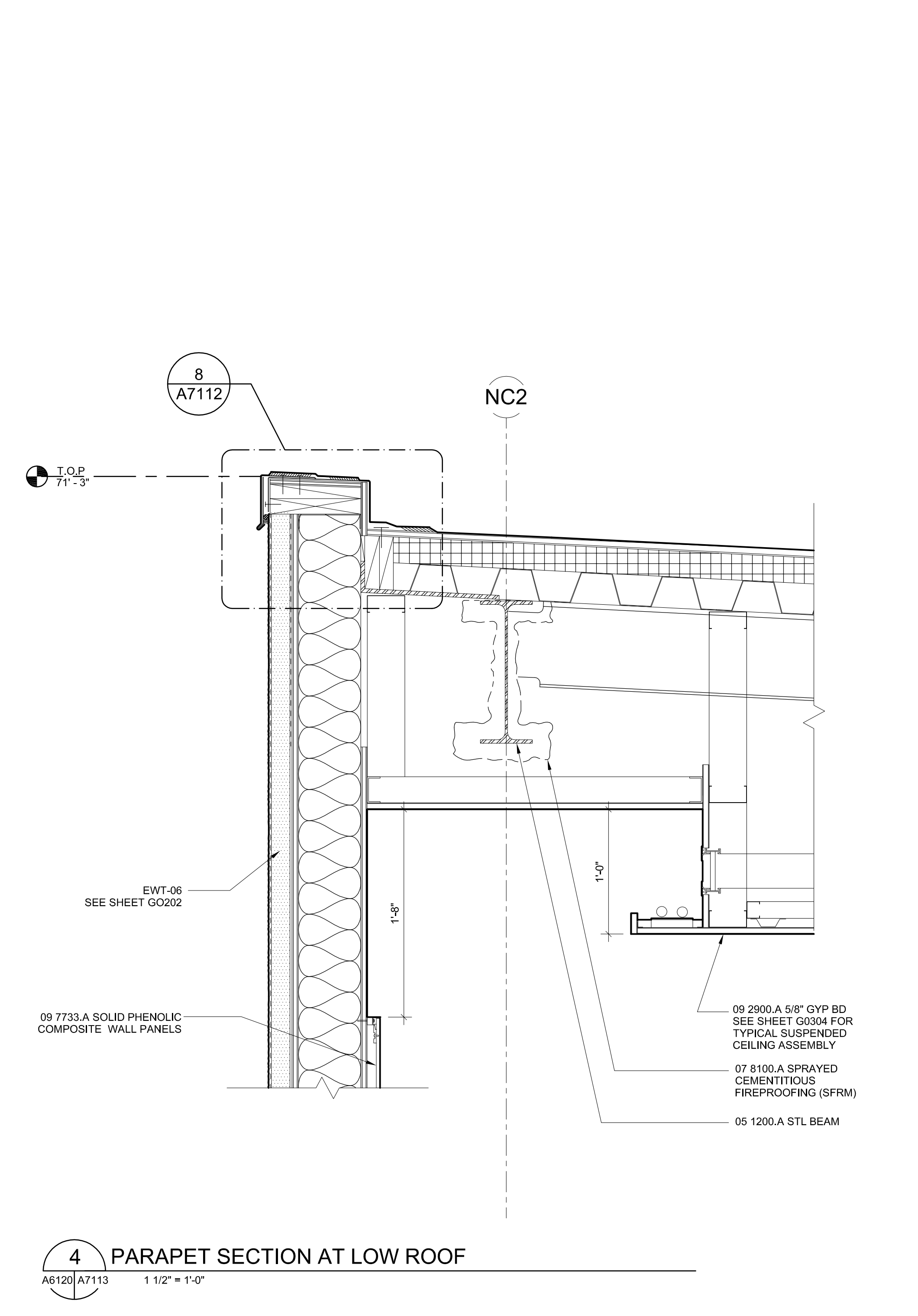


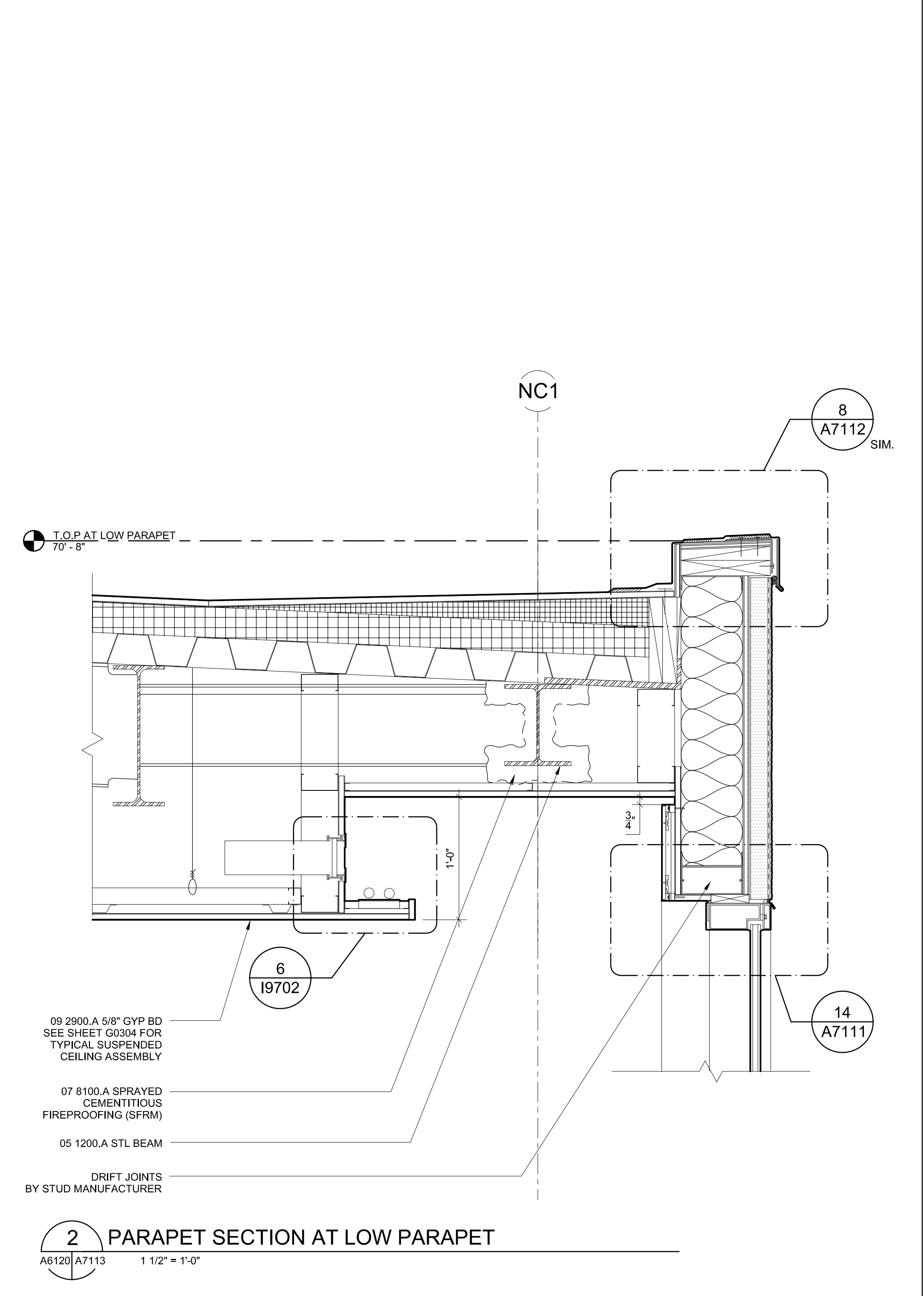
8 SECTION AT SLOPED ROOF TRANSITION
A6120/A7113 1 1/2" = 1'-0"



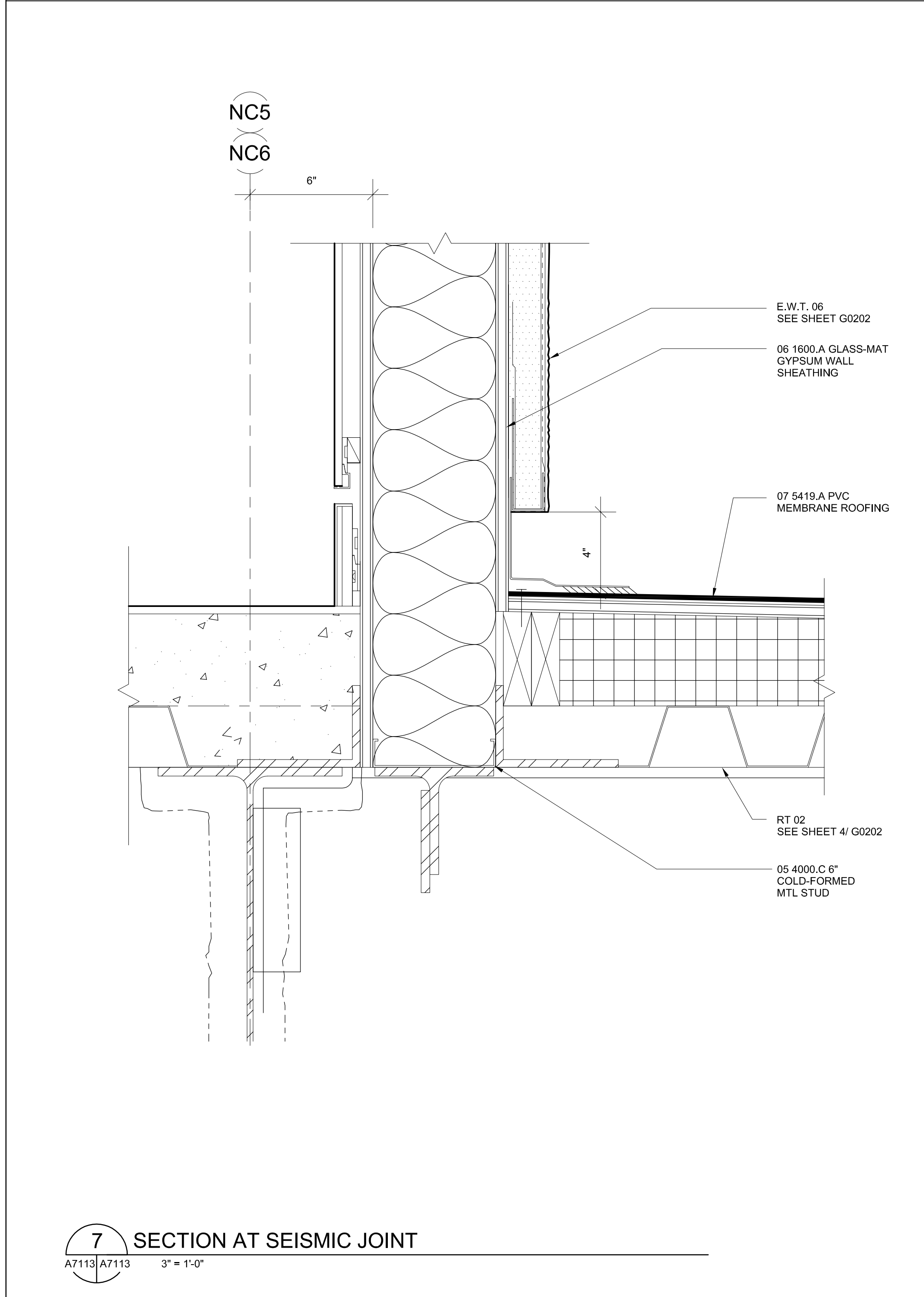
6 SECTION AT DRIFT JOINTS
A6120/A7113 1 1/2" = 1'-0"



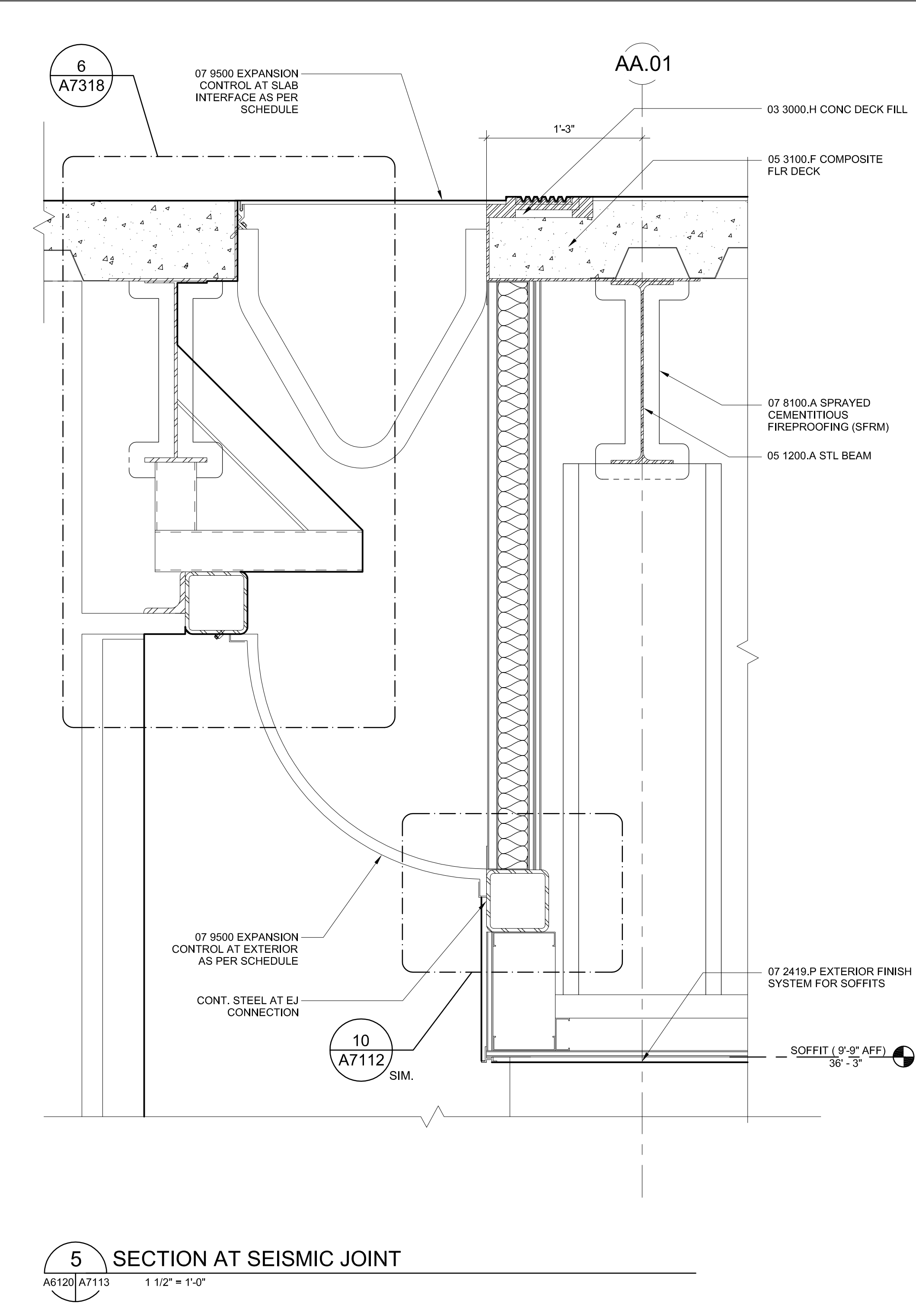
4 PARAPET SECTION AT LOW ROOF
A6120/A7113 1 1/2" = 1'-0"



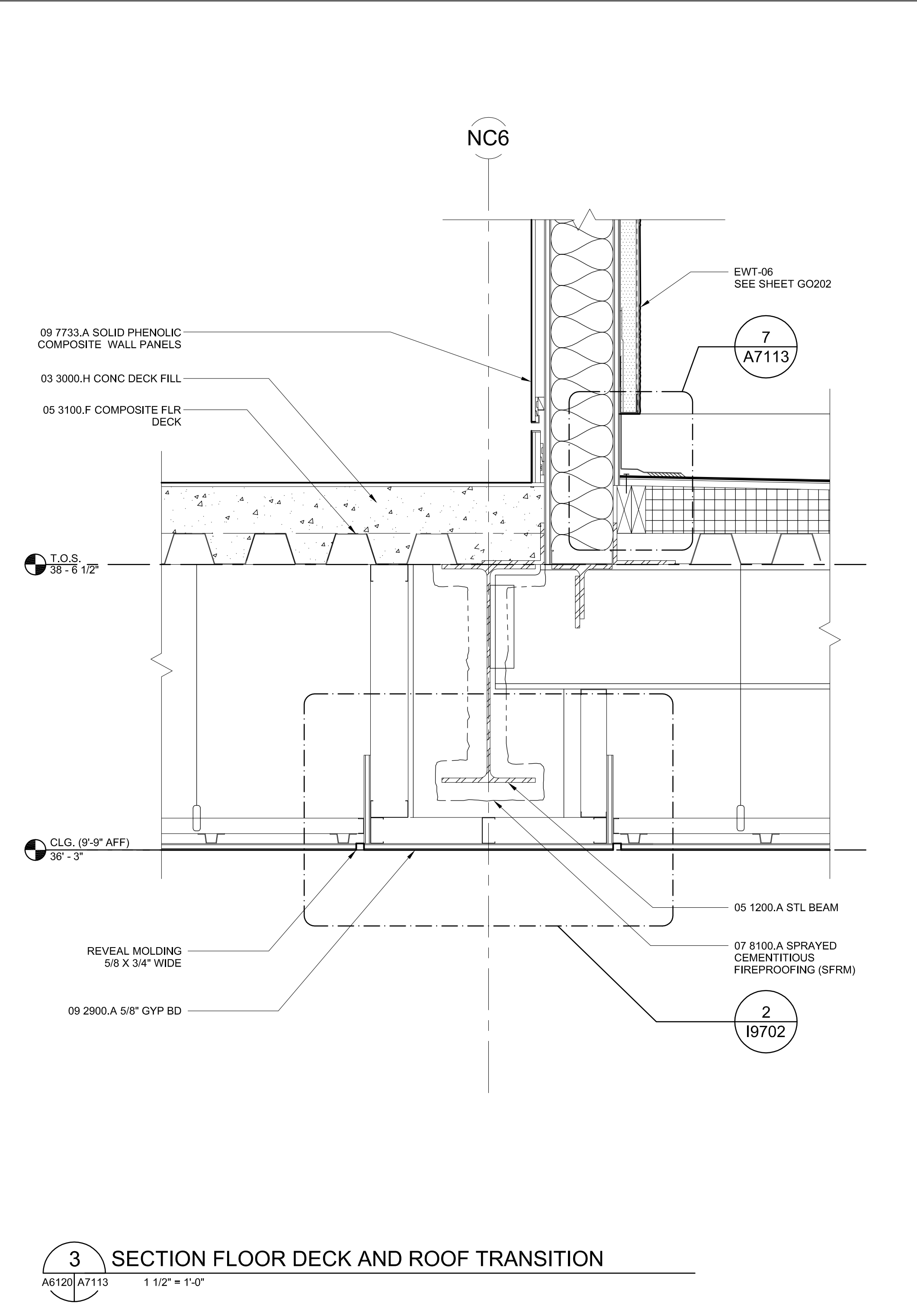
2 PARAPET SECTION AT LOW PARAPET
A6120/A7113 1 1/2" = 1'-0"



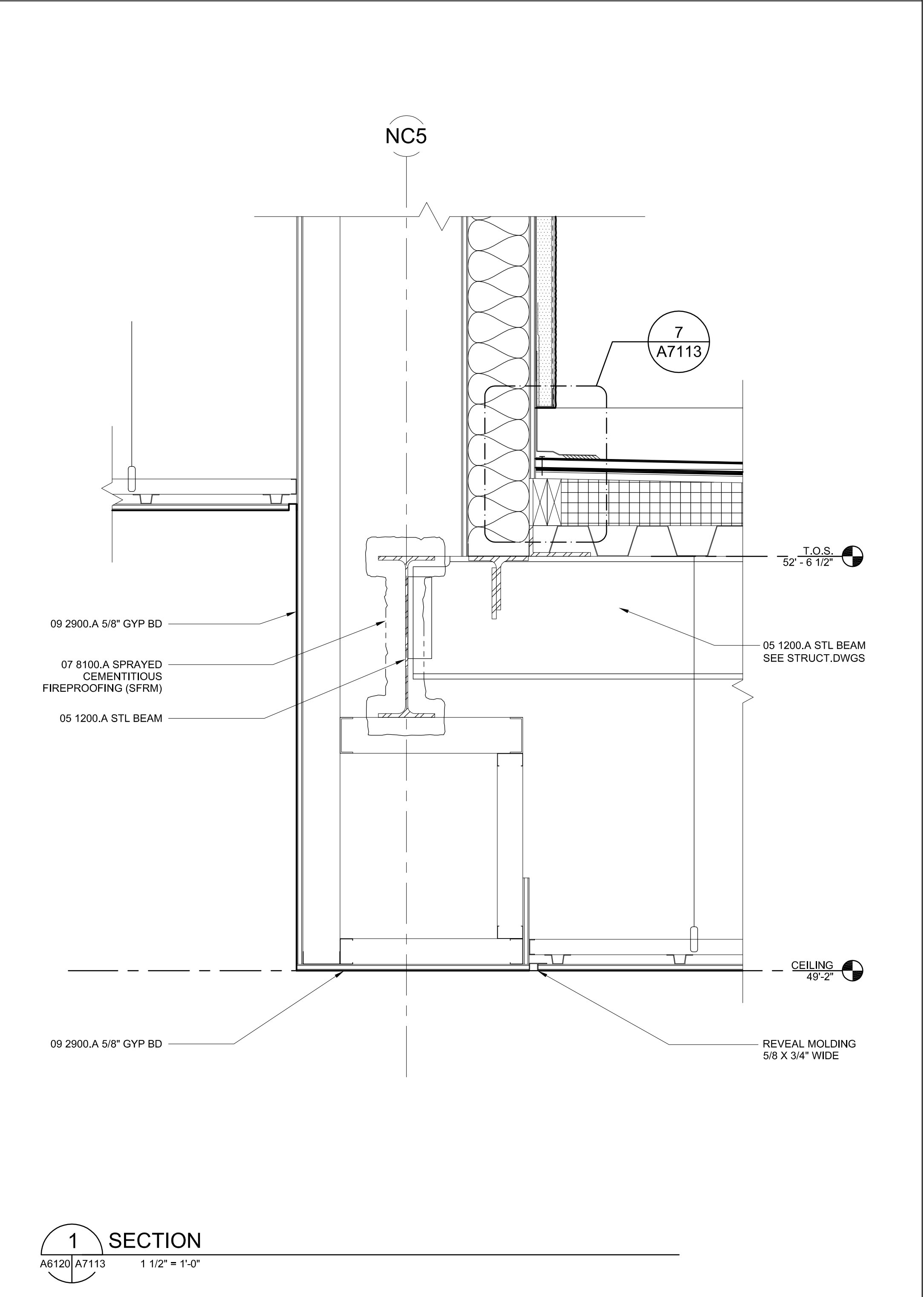
7 SECTION AT SEISMIC JOINT
A7113/A7113 3" = 1'-0"



5 SECTION AT SEISMIC JOINT
A6120/A7113 1 1/2" = 1'-0"



3 SECTION FLOOR DECK AND ROOF TRANSITION
A6120/A7113 1 1/2" = 1'-0"



1 SECTION
A6120/A7113 1 1/2" = 1'-0"

CONSULTANT	CONSULTANT	CONSULTANT
------------	------------	------------

FENTRESS
ARCHITECTS

REV. NO.	DATE	DESCRIPTION	REV. NO.	DATE	DESCRIPTION
DP5-B2	2010 0215	DESIGN PACKAGE #5 BULLETIN 2			

Los Angeles World Airports
LAX Bus Gate Connector Ext
DETAILS
A7113